

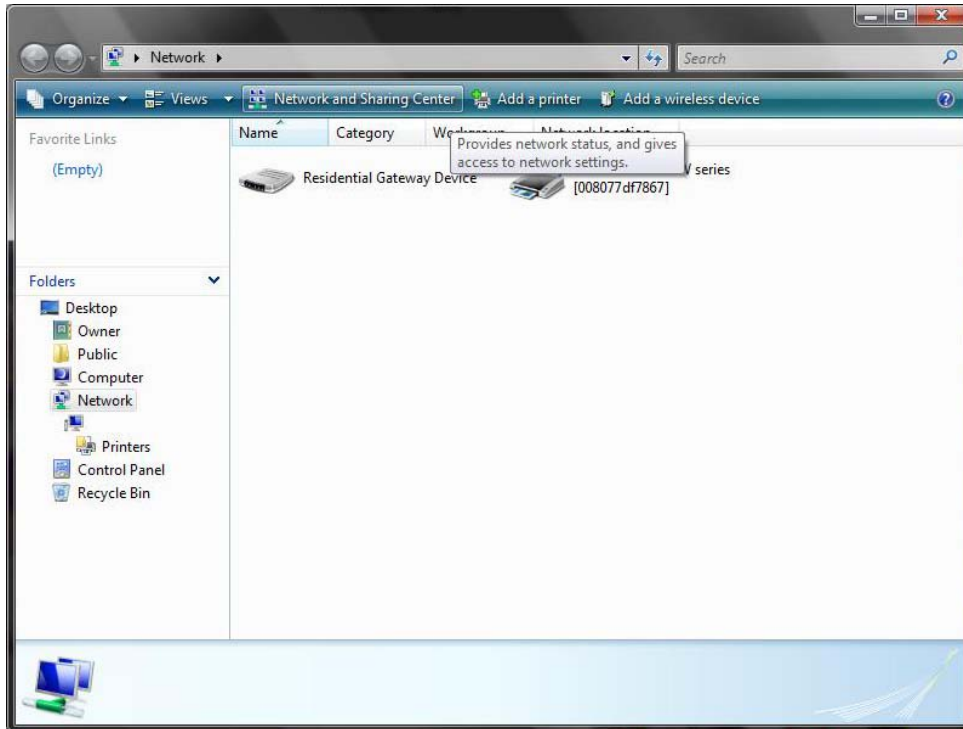
MacMurray Guest Wireless Network Connection

The MacMurray College MACGUEST wireless network provides open, unencrypted access to the Internet and MacMurray College Internet resources including web e-mail access. This wireless network is provided for guests of the college and for students who wish to use it instead of the encrypted MACSTUDENT wireless network. This document provides instructions for connecting machines running Microsoft Windows Vista to the network.

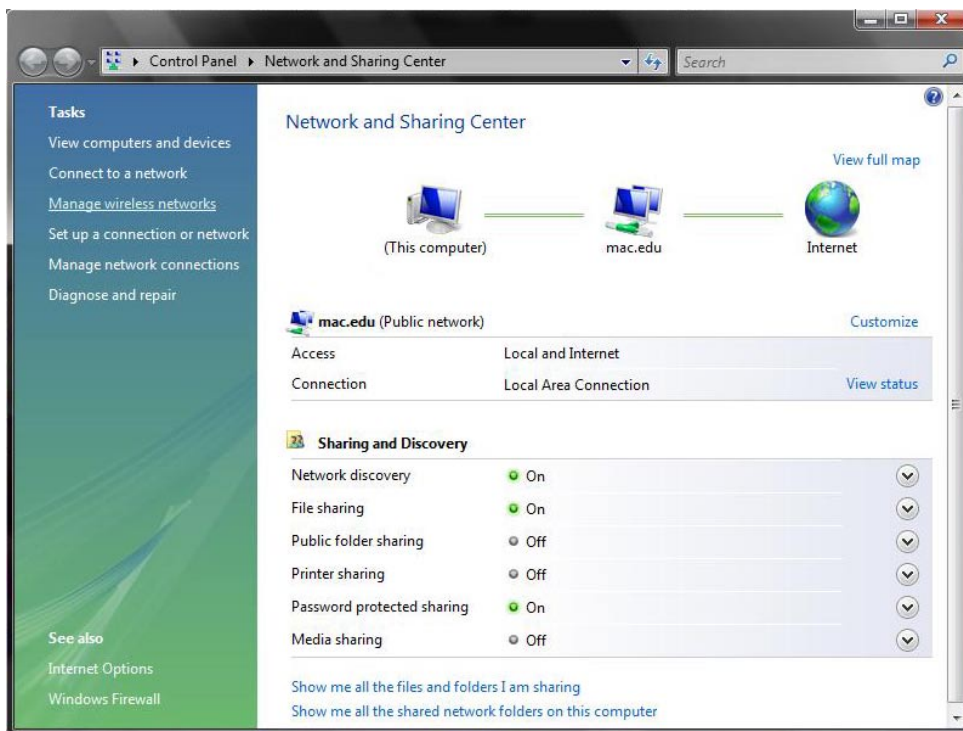
To begin a connection from Microsoft Windows Vista to the MACGUEST network, choose the “Start → Network” menu.



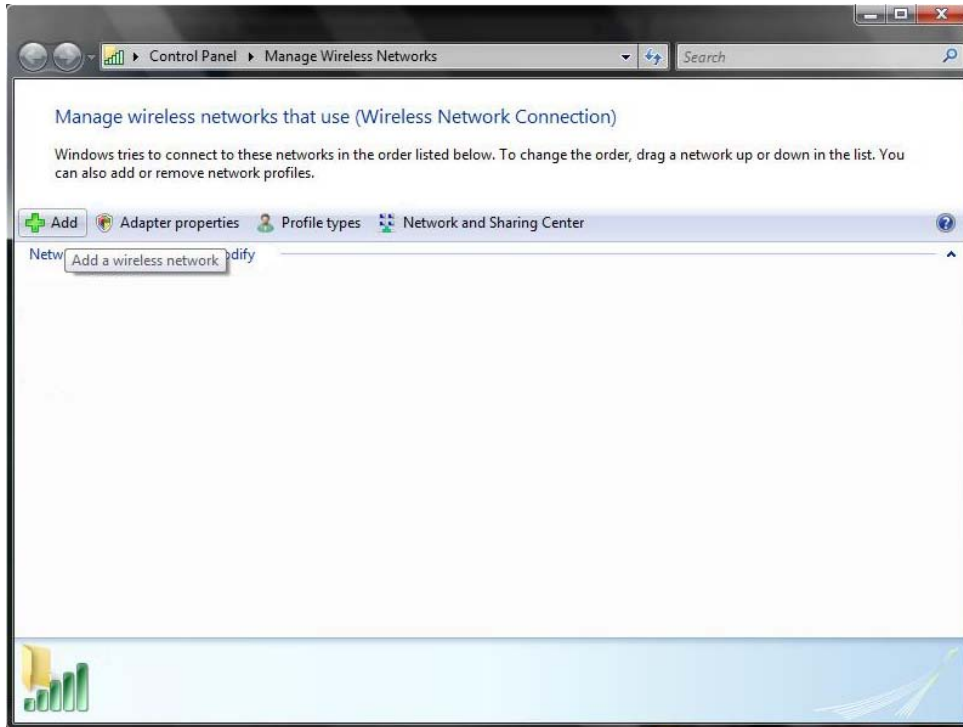
Next, select “Network and sharing Center” from the menu bar.



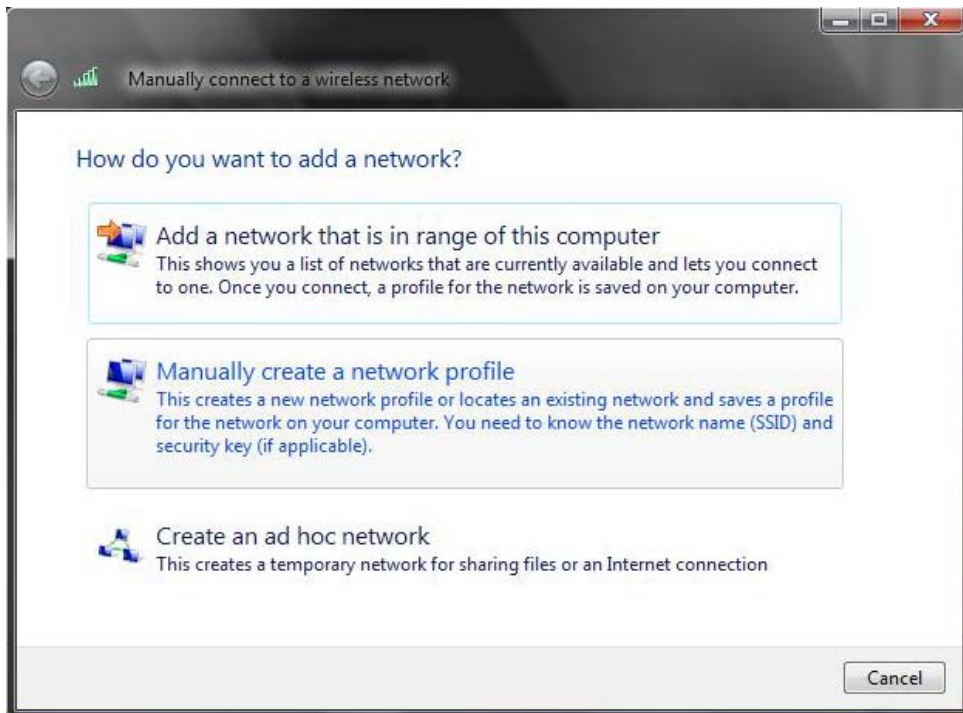
From the Network and Sharing Center, select “Manage Wireless Networks” from the Tasks menu on the left.



Next, select “Add” from the Wireless Network Management Application.



Select “Manually Create a Network Profile.”



Fill out the dialogue box as shown below. You may select “Start this connection automatically” if you want your system to connect to this network whenever it is available.

Manually connect to a wireless network

Enter information for the wireless network you want to add

Network name:

Security type:

Encryption type:

Security Key/Passphrase: Display characters

Start this connection automatically

Connect even if the network is not broadcasting
Warning: If you select this option, your computer's privacy might be at risk.

Next Cancel

You may select “Connect to...” if you would like to connect to the network immediately. If not, you may close the window.

Manually connect to a wireless network

Successfully added MACGUEST

→ Connect to...
Open the "Connect to a network" dialog so I can connect.

→ Change connection settings
Open the connection properties so that I can change the settings.

Close

To connect to the network, you can choose “Connect to...” from the Start menu. From the “Connect to...” application, you can highlight MACGUEST, and choose “Connect.” If the connection is successful, the text reading “Unsecured Network” will change to “Connected.”

