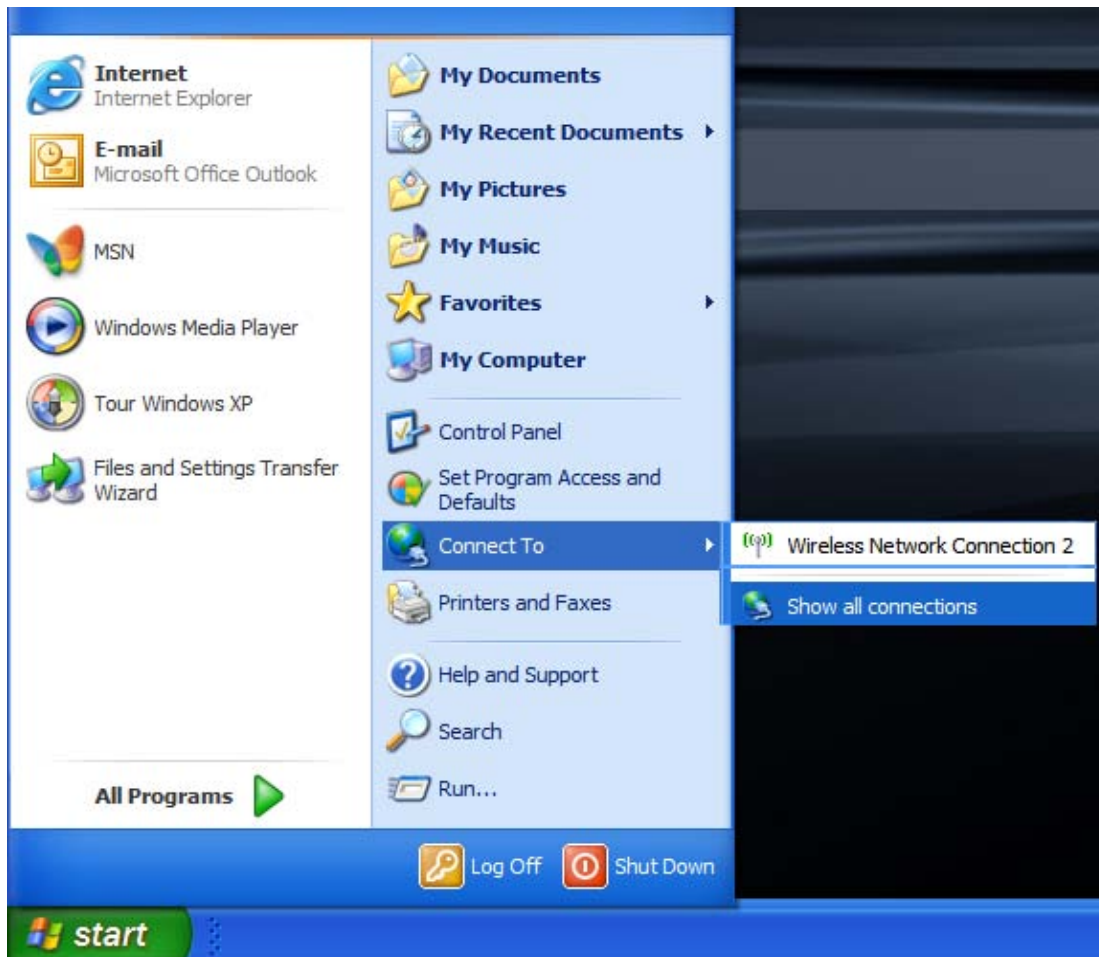


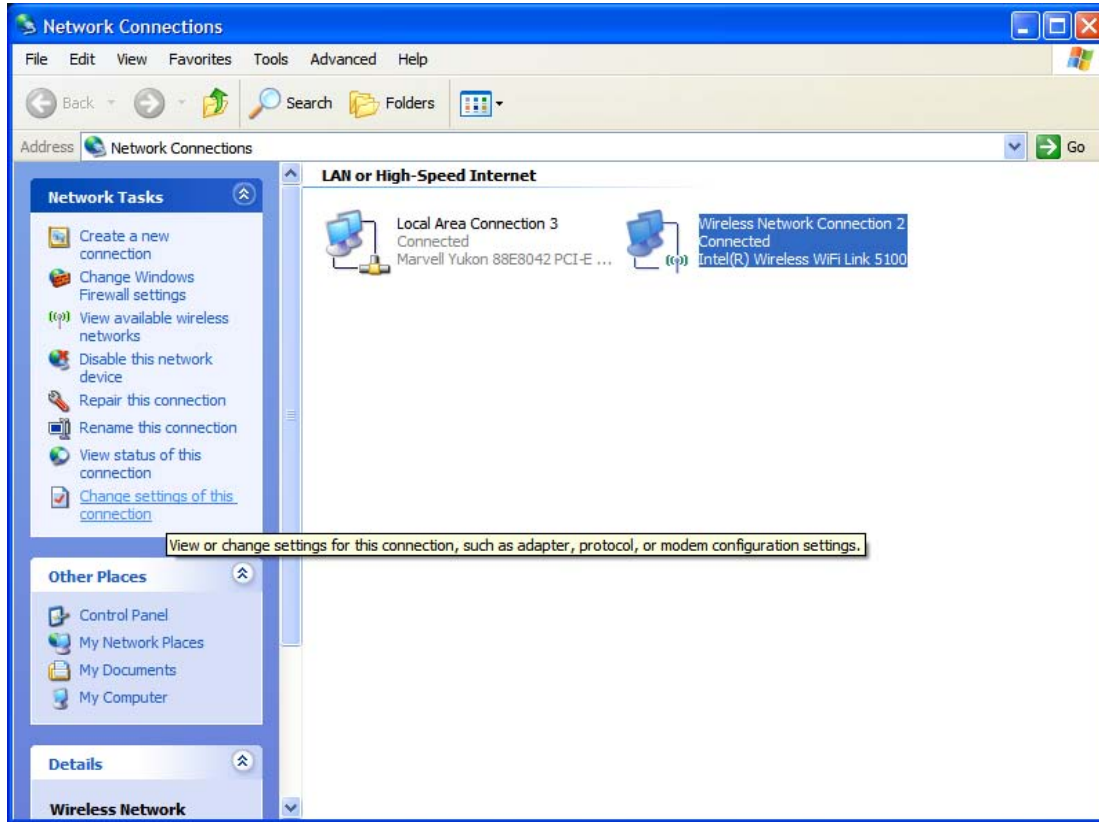
MacMurray Guest Wireless Network Connection

The MacMurray College MACGUEST wireless network provides open, unencrypted access to the Internet and MacMurray College Internet resources including web e-mail access. This wireless network is provided for guests of the college and for students who wish to use it instead of the encrypted MACSTUDENT wireless network. This document provides instructions for connecting machines running Microsoft Windows XP to the network.

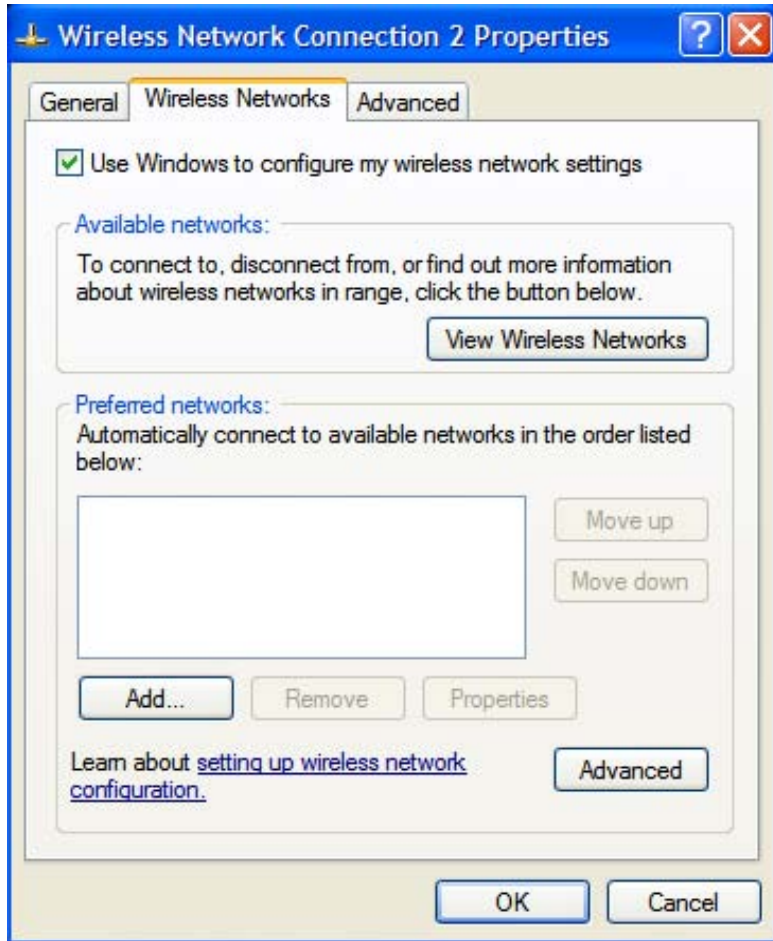
To begin a connection from Microsoft Windows XP to the MACGUEST network, choose the “Start → Connect To → Show all connections” menu.



Next, highlight your Wireless Network Connection and select “Change settings of this connection”, which is one of the “Network Tasks” on the left side of the window.



Next, go to the “Wireless Networks” tab of the properties window. From this window, select “Add” to add the MACGUEST wireless network.



Fill out the "Association" tab of the resulting window as depicted below.

The image shows a Windows dialog box titled "Wireless network properties" with three tabs: "Association", "Authentication", and "Connection". The "Association" tab is selected. The "Network name (SSID)" field contains "MACGUEST". There is an unchecked checkbox for "Connect even if this network is not broadcasting". Below this is a section titled "Wireless network key" with the text "This network requires a key for the following:". Underneath, "Network Authentication" is set to "Open" and "Data encryption" is set to "Disabled". There are empty text boxes for "Network key" and "Confirm network key". The "Key index (advanced)" is set to "1". There is a checked checkbox for "The key is provided for me automatically". At the bottom, there is an unchecked checkbox for "This is a computer-to-computer (ad hoc) network; wireless access points are not used". The dialog has "OK" and "Cancel" buttons at the bottom right.

Wireless network properties

Association Authentication Connection

Network name (SSID): MACGUEST

Connect even if this network is not broadcasting

Wireless network key

This network requires a key for the following:

Network Authentication: Open

Data encryption: Disabled

Network key:

Confirm network key:

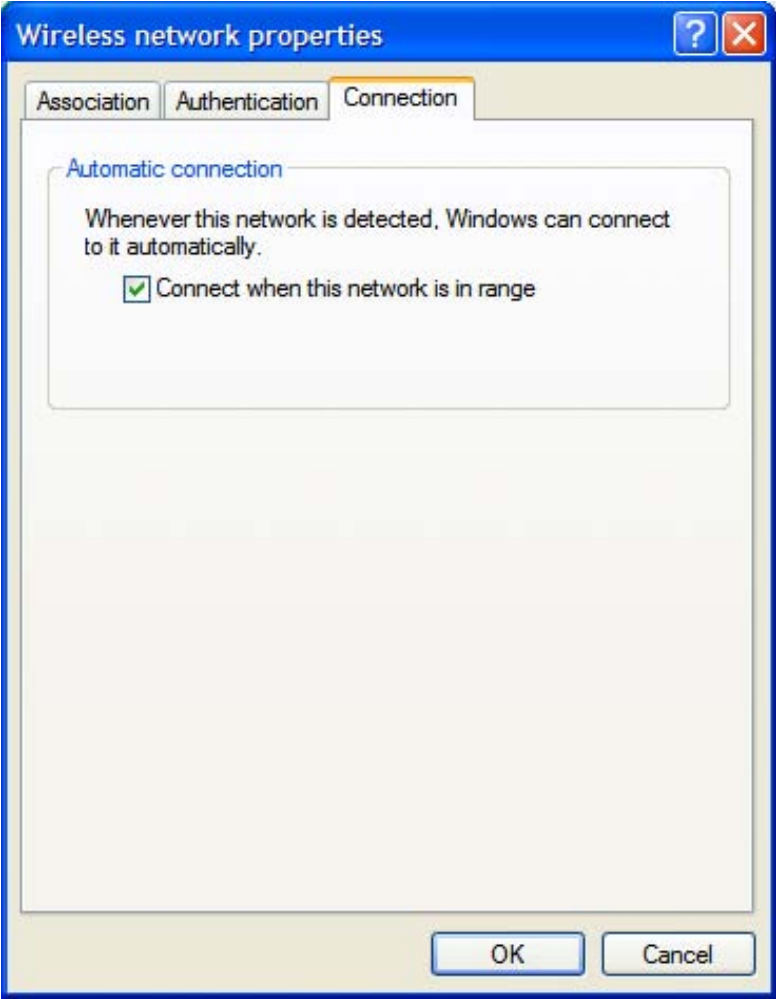
Key index (advanced): 1

The key is provided for me automatically

This is a computer-to-computer (ad hoc) network; wireless access points are not used

OK Cancel

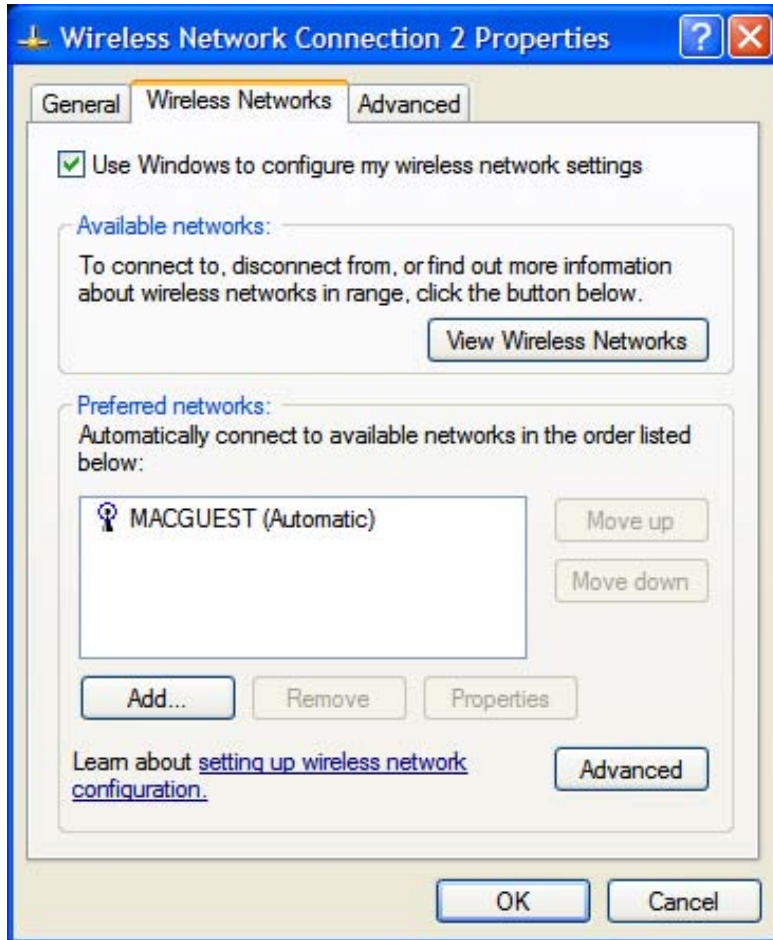
The "Connection" tab of the configuration window can be filled out as the user desires. If the "Connect when this network is in range" box is selected, your machine will attempt to connect to the MACGUEST network when it is available.



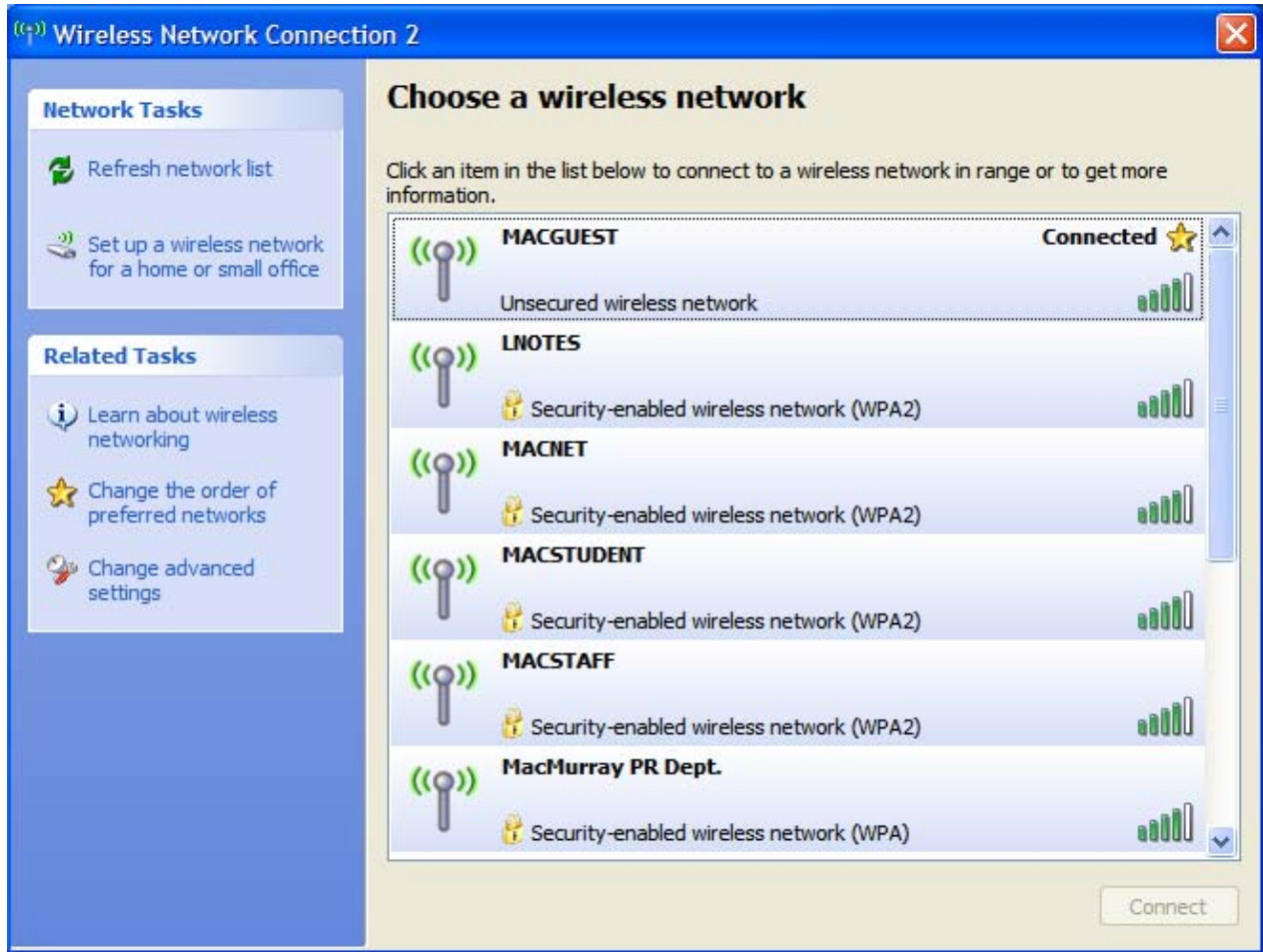
When you select "OK" to continue the configuration, you may be prompted to approve the connection to an unencrypted network. To allow this, select "Continue Anyway."



The resulting connection will appear as below. Click "OK" to commit the configuration.



You may connect to MACGUEST or any other wireless network that you have configured by utilizing the “Start → Connect To → Show all connections” menu item as you did at the start of these instructions. From there, select the “View available wireless network” task from the left menu and you will be presented with a window like the one you see below.



From this window, select the MACGUEST network and select the “Connect” button at the bottom of the screen. If the connection is successful, the network will show “Connected” as in the figure above. If you are not connected, it will read “On Demand” instead.